

**PLEASE CHECK WWW.MOLEX.COM FOR LATEST PART INFORMATION**

**Part Number:** [0009652078](#)  
**Status:** **Active**  
**Overview:** [kk](#)  
**Description:** 3.96mm (.156") Pitch SPOX™ and KK® Wire-to-Board Header, Vertical, with Friction Lock, 7 Circuits

**Documents:**

|   |   |
|---|---|
| <a href="#">3D Model</a>                                | <a href="#">Product Specification PS-5239-006 (PDF)</a> |
| <a href="#">Drawing (PDF)</a>                           | <a href="#">Product Specification PS-5239-007 (PDF)</a> |
| <a href="#">Product Specification PS-5195-001 (PDF)</a> | <a href="#">Product Specification PS-5273-003 (PDF)</a> |
| <a href="#">Product Specification PS-5195-005 (PDF)</a> | <a href="#">Product Specification PS-5273-004 (PDF)</a> |
| <a href="#">Product Specification PS-5239-002 (PDF)</a> | <a href="#">RoHS Certificate of Compliance (PDF)</a>    |
| <a href="#">Product Specification PS-5239-004 (PDF)</a> |   |

**Agency Certification**

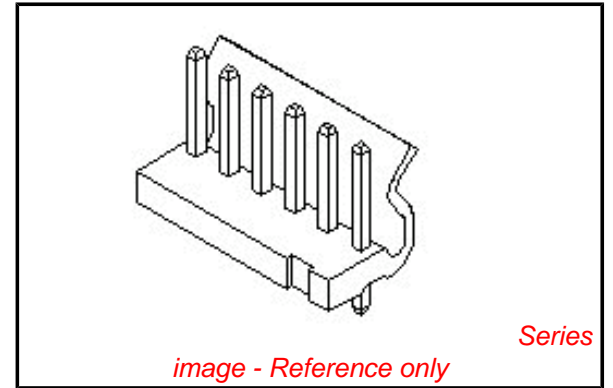
|     |           |
|-----|-----------|
| CSA | LR19980   |
| TUV | R72090224 |
| UL  | E29179    |

**General**

|                |                      |
|----------------|----------------------|
| Product Family | PCB Headers          |
| Series         | <a href="#">5273</a> |
| Application    | Wire-to-Board        |
| Overview       | <a href="#">kk</a>   |
| Product Name   | KK®, SPOX™           |

**Physical**

|                                |          |
|--------------------------------|----------|
| Breakaway                      | No       |
| Circuits (Loaded)              | 7        |
| Circuits (maximum)             | 7        |
| Color - Resin                  | Natural  |
| Durability (mating cycles max) | 30       |
| First Mate / Last Break        | No       |
| Flammability                   | 94V-2    |
| Glow-Wire Compliant            | No       |
| Guide to Mating Part           | No       |
| Keying to Mating Part          | None     |
| Lock to Mating Part            | Yes      |
| Material - Metal               | Brass    |
| Material - Plating Mating      | Tin      |
| Material - Plating Termination | Tin      |
| Material - Resin               | Nylon    |
| Number of Rows                 | 1        |
| Orientation                    | Vertical |
| PC Tail Length (in)            | 0.142 In |
| PC Tail Length (mm)            | 3.60 mm  |
| PCB Locator                    | No       |
| PCB Retention                  | None     |
| PCB Thickness Recommended (in) | 0.062 In |
| PCB Thickness Recommended (mm) | 1.60 mm  |
| Packaging Type                 | Bag      |
| Pitch - Mating Interface (in)  | 0.156 In |
| Pitch - Mating Interface (mm)  | 3.96 mm  |
| Plating min: Mating (µin)      | 200      |
| Plating min: Mating (µm)       | 5        |
| Plating min: Termination (µin) | 200      |



**EU RoHS**

**ELV and RoHS Compliant**  
**REACH SVHC**  
 Not Reviewed  
**Halogen-Free Status**  
**Not Reviewed**

**China RoHS**



**Need more information on product environmental compliance?**

Email [productcompliance@molex.com](mailto:productcompliance@molex.com)  
 For a multiple part number RoHS Certificate of Compliance, [click here](#)

Please visit the [Contact Us](#) section for any non-product compliance questions.

**Search Parts in this Series**

[5273Series](#)

**Mates With**

[5195](#) SPOX™ Crimp Housing. [5239](#) KK® Crimp Housing

|                                |                 |
|--------------------------------|-----------------|
| Plating min: Termination (µm)  | 5               |
| Polarized to PCB               | No              |
| Shrouded                       | Partial         |
| Stackable                      | No              |
| Surface Mount Compatible (SMC) | No              |
| Temperature Range - Operating  | -40°C to +105°C |
| Termination Interface: Style   | Through Hole    |

**Electrical**

|                               |      |
|-------------------------------|------|
| Current - Maximum per Contact | 7A   |
| Voltage - Maximum             | 250V |

**Material Info**

|                 |          |
|-----------------|----------|
| Old Part Number | 5273-07A |
|-----------------|----------|

**Reference - Drawing Numbers**

|                         |   |
|-------------------------|---|
| Packaging Specification | SPK-5273-001  |
| Product Specification   | PS-5195-001, PS-5195-005, PS-5239-002,<br>PS-5239-004, PS-5239-006, PS-5239-007,<br>PS-5273-003, PS-5273-004, RPS-5195-002,<br>RPS-5239-001, RPS-5273-002 |
| Sales Drawing           | SD-5273-001   |

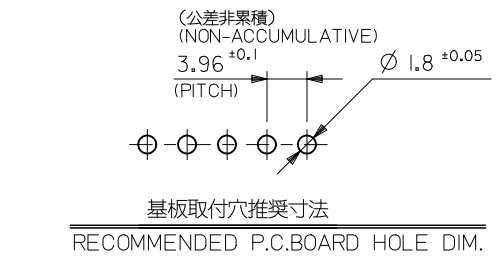
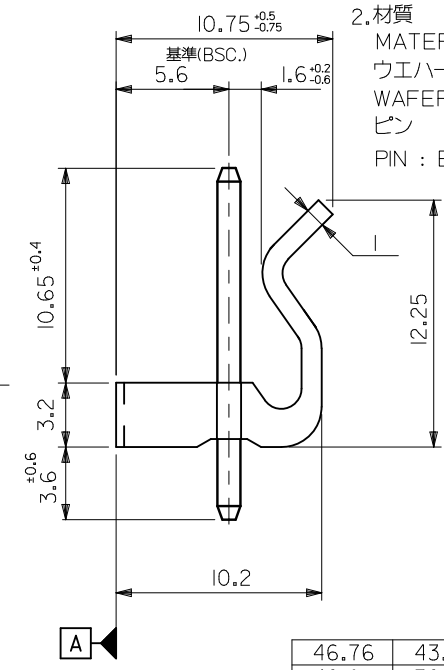
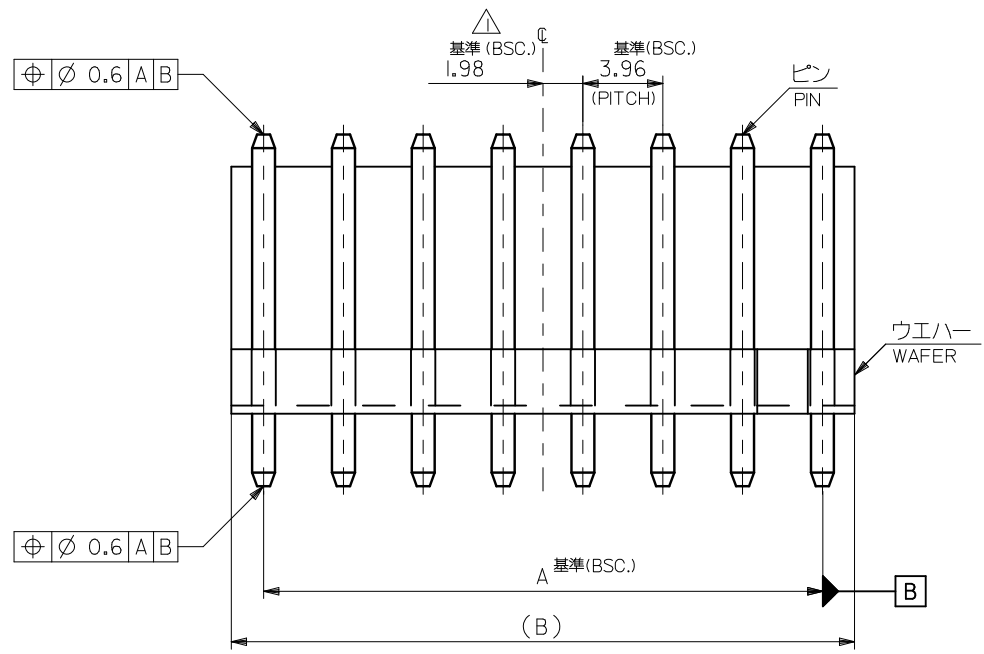
This document was generated on 05/24/2010

**PLEASE CHECK [WWW.MOLEX.COM](http://WWW.MOLEX.COM) FOR LATEST PART INFORMATION**

注記  
NOTES

△全極数が偶数の場合のみ適用。  
TO BE APPLIED ONLY WHEN ALL CKTS ARE EVEN.

2.材質  
MATERIAL  
ウエハー : 66ナイロン, UL 94V-2  
WAFER : 66NYLON, UL-94V-2  
ピン : 黄銅, 銅下地錫メッキ (□1.14X17.45)  
PIN : BRASS, TIN OVER COPPER PLATING (□1.14X17.45)



|       |       |   |          |            |
|-------|-------|---|----------|------------|
| 46.76 | 43.56 | 09-65-2128                              | 5273-12A | 12         |
| 42.8  | 39.6  | ▲ -2118                                 | ▲ -11A   | 11         |
| 38.84 | 35.64 | ▲ -2108                                 | ▲ -10A   | 10         |
| 34.88 | 31.68 | ▲ -2098                                 | ▲ -09A   | 9          |
| 30.92 | 27.72 | ▲ -2088                                 | ▲ -08A   | 8          |
| 26.96 | 23.76 | ▲ -2078                                 | ▲ -07A   | 7          |
| 23    | 19.8  | ▲ -2068                                 | ▲ -06A   | 6          |
| 19.04 | 15.84 | ▲ -2058                                 | ▲ -05A   | 5          |
| 15.08 | 11.88 | ▲ -2048                                 | ▲ -04A   | 4          |
| 11.12 | 7.92  | ▼ -2038                                 | ▼ -03A   | 3          |
| 7.16  | 3.96  | 09-65-2028                              | 5273-02A | 2          |
| B     | A     | オーダー番号 (EDP NO.)<br>ORDER NO. (EDP NO.) | ENG. NO. | 極数<br>CKTS |

|   |                                       |              |  |                    |                                       |  |   |  |                        |  |
|---|---------------------------------------|--------------|--|--------------------|---------------------------------------|--|---|--|------------------------|--|
| REVISED<br>EC NO.: J2009-2884<br>DRWN: YSHIBATA 2009/06/23<br>CHKD: THARUYAMA 2010/03/15<br>APPR: NUKITA 2010/03/15 | GENERAL TOLERANCES (UNLESS SPECIFIED) |              | DIMENSION STYLE<br>MM ONLY                           |                    | SCALE<br>---                          |  | DESIGN UNITS<br>METRIC  |  | THIRD ANGLE PROJECTION |  |
|   | 10 UNDER                              | ±0.2         | DRAWN BY<br>S. MOCHIZUKI                             | DATE<br>1989/05/12 | TITLE<br>KK 3.96 WAFER ASSY WITH LOCK |  |   |  |                        |  |
|   | 10 OVER 30 UNDER                      | ±0.25        | CHECKED BY<br>H.H.                                   | DATE<br>1991/04/10 | MOLEX INCORPORATED                    |  |   |  |                        |  |
|   | 30 OVER                               | ±0.3         | APPROVED BY<br>M. ENOMOTO                            | DATE<br>1991/04/10 | DOCUMENT NO.<br>SD-5273-001           |  |   |  |                        |  |
| REV   | DESCRIPTION                           | ANGULAR ±3 ° | DRAFT WHERE APPLICABLE MUST REMAIN WITHIN DIMENSIONS |                    | SIZE<br>A3                            |  | THIS DRAWING CONTAINS INFORMATION THAT IS PROPRIETARY TO MOLEX INCORPORATED AND SHOULD NOT BE USED WITHOUT WRITTEN PERMISSION |  |                        |  |